



Long Valley Charter School

A Non-Profit Public Benefit Corporation

SPECIAL BOARD MEETING

Thursday, August 31, 2023 at 5:45 PM

**At Long Valley School
436-965 Susan Drive, Doyle, CA 96109**

Teleconference Participation available via Zoom

<https://us02web.zoom.us/j/89074376516?pwd=MnRLa09TTWNCVTNwdTdlblU1SjRBUT09>

Teleconference participation is also available at these physical locations:

**257 E. Sierra St. Suite C, Portola, CA 96122
995 Paiute Lane, Susanville, CA 96130**

Agenda

Upon request, this agenda will be made available in appropriate alternative formats to persons with disabilities, as required by Section 202 of the Americans with Disabilities Act of 1990. Any person with a disability who requires a modification or accommodation in order to participate in a meeting should direct such request to Sherri Morgan, Executive Director/ Superintendent at 530-827-2395 at least 24 hours before the meeting, if possible.

We welcome you to this public meeting. Members of the public may be heard on any business item on the Board's Agenda. A person addressing the Board will be limited to three (3) minutes unless the Chairperson of the Board grants a longer or shorter period of time depending upon the number of speakers and the size of the agenda. The Board will only allow comments by members of the public on an item that appears on the Agenda during consideration of the item. We would appreciate it if you would identify yourself with your name when addressing the Board.

- I. Call to order and roll call** Time: PM
- II.** Shaun Giese Wilma Kominek Stacy Kirklin Jason Ingram Randi Collier
- III. Pledge of Allegiance**
- IV. Approval of the Agenda**
- V. Action Items**
 - A.** Discussion and possible action regarding approval of change orders for the Doyle campus construction project.
- VI. Adjournment:** Meeting adjourned at

ZOOM details

Dial in: 1 669 900 6833

Meeting ID: 890 7437 6516 Passcode: 4aH8V9 or 494710

**LONG VALLEY CHARTER SCHOOL
BOARD RECOMMENDATION FORM**

AGENDA ITEM: Action Item A-Change Order Costs

SUMMARY:

After the change in the plans to meet the snow load/ wind requirements, we lost the natural light in the gymnasium. This can be remedied by adding windows. The date of order for the metal building is anticipated to be this Friday, hence the need for the special meeting to approve.

Windows as presented in the attached drawing: \$19,250

Additionally, we are requesting two-tone siding: \$3,600

I requested the addition of an attractive entry as shown in the drawing. The estimated cost for this: \$18,000.

If you agree, you will be approving a cost of \$40,850.00

Last year, we designated some of our reserves to include anticipated additional costs; we have approximately \$200k remaining for this purpose.

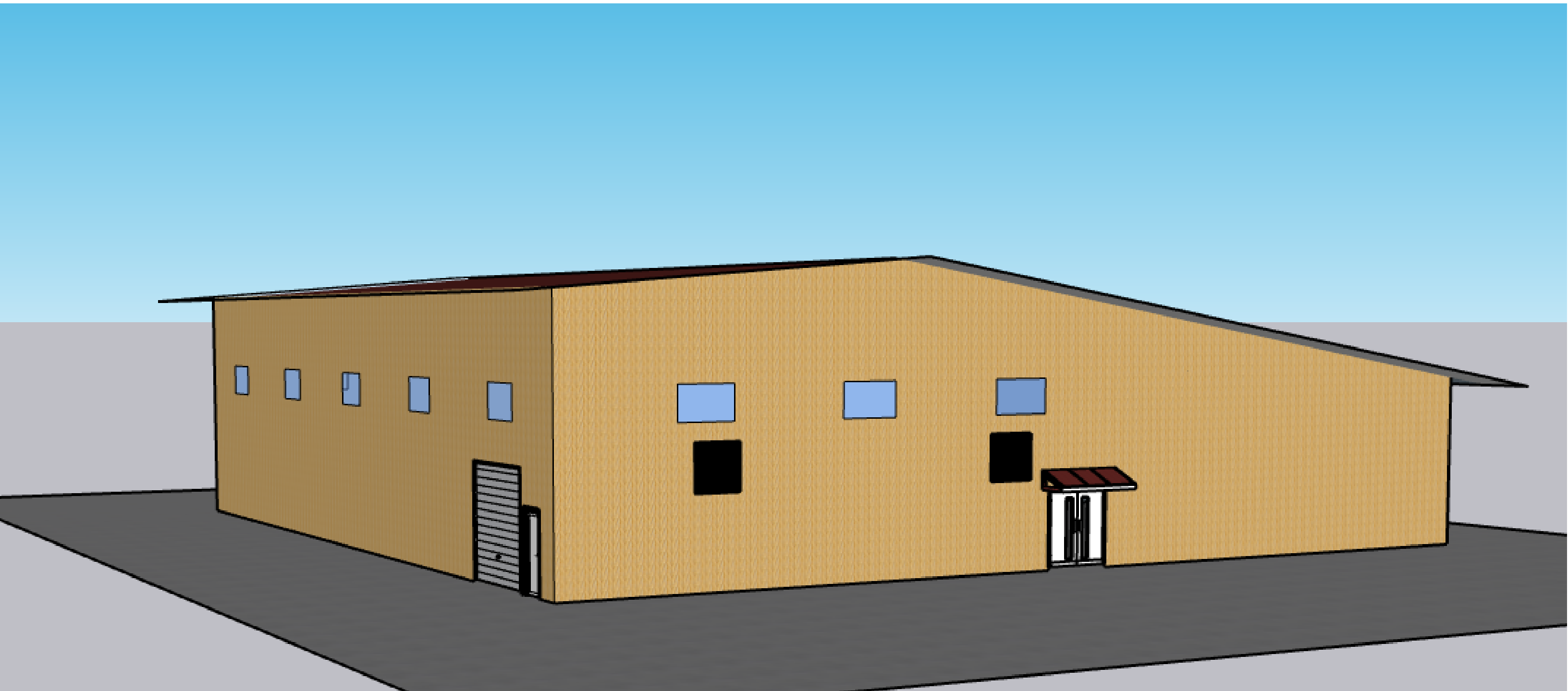
DIRECTOR'S RECOMMENDATION:

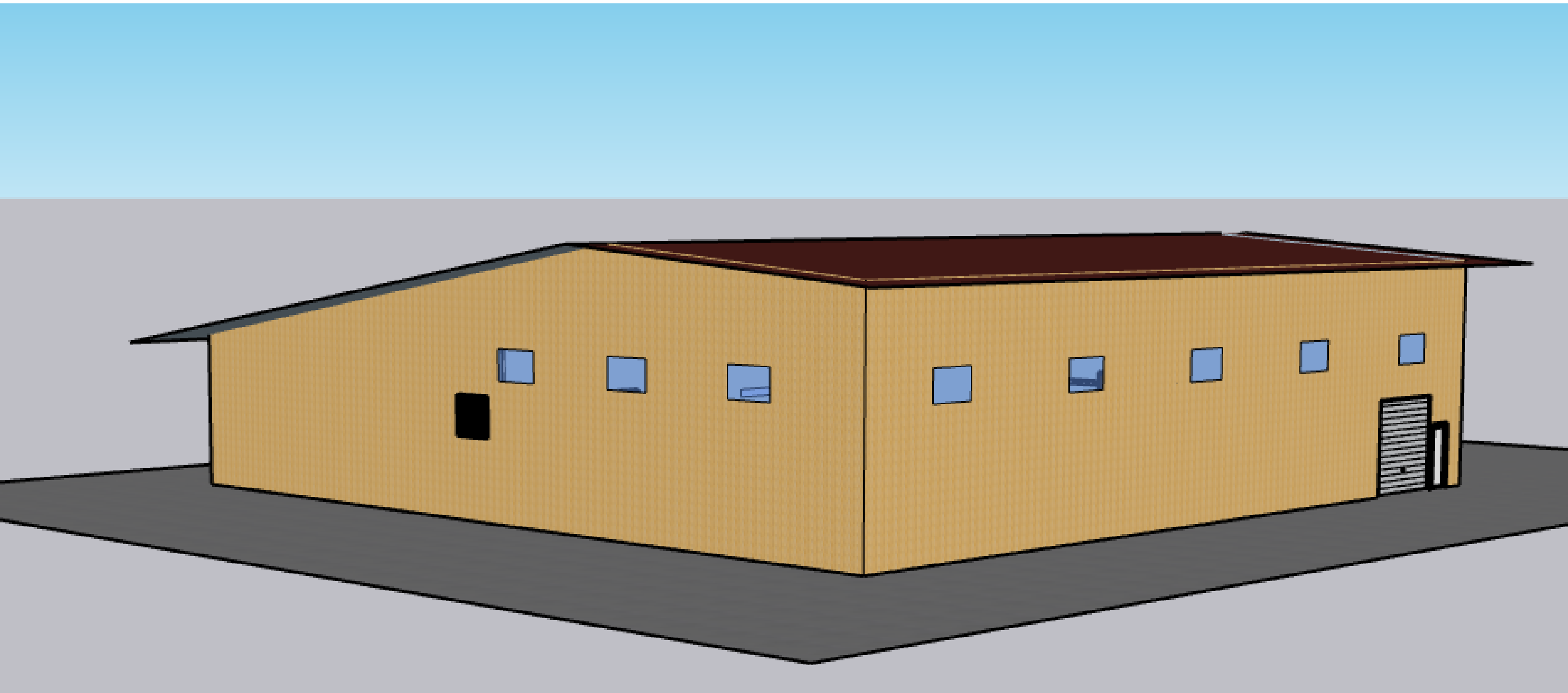
Approve as Presented Disapprove

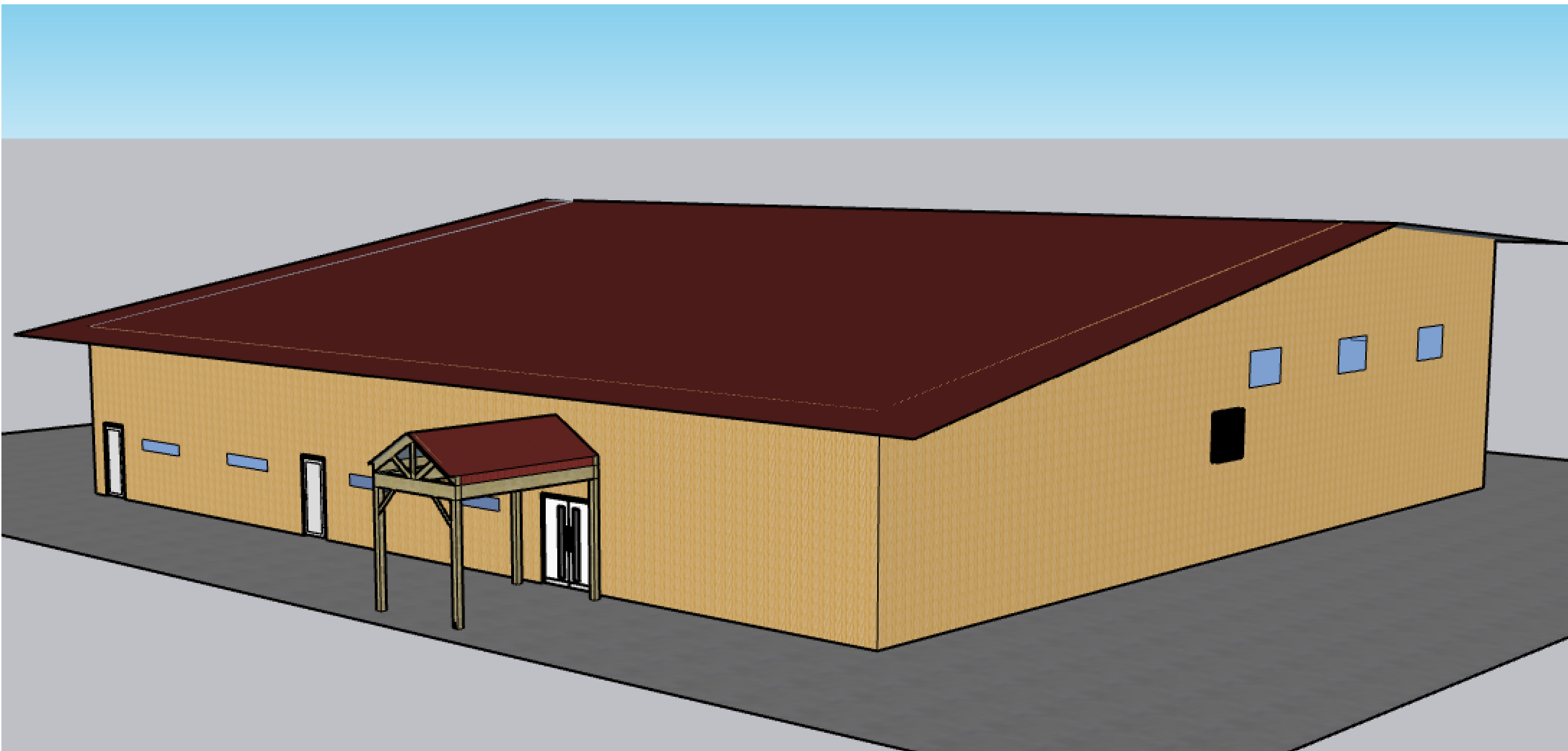
This action item concerns:

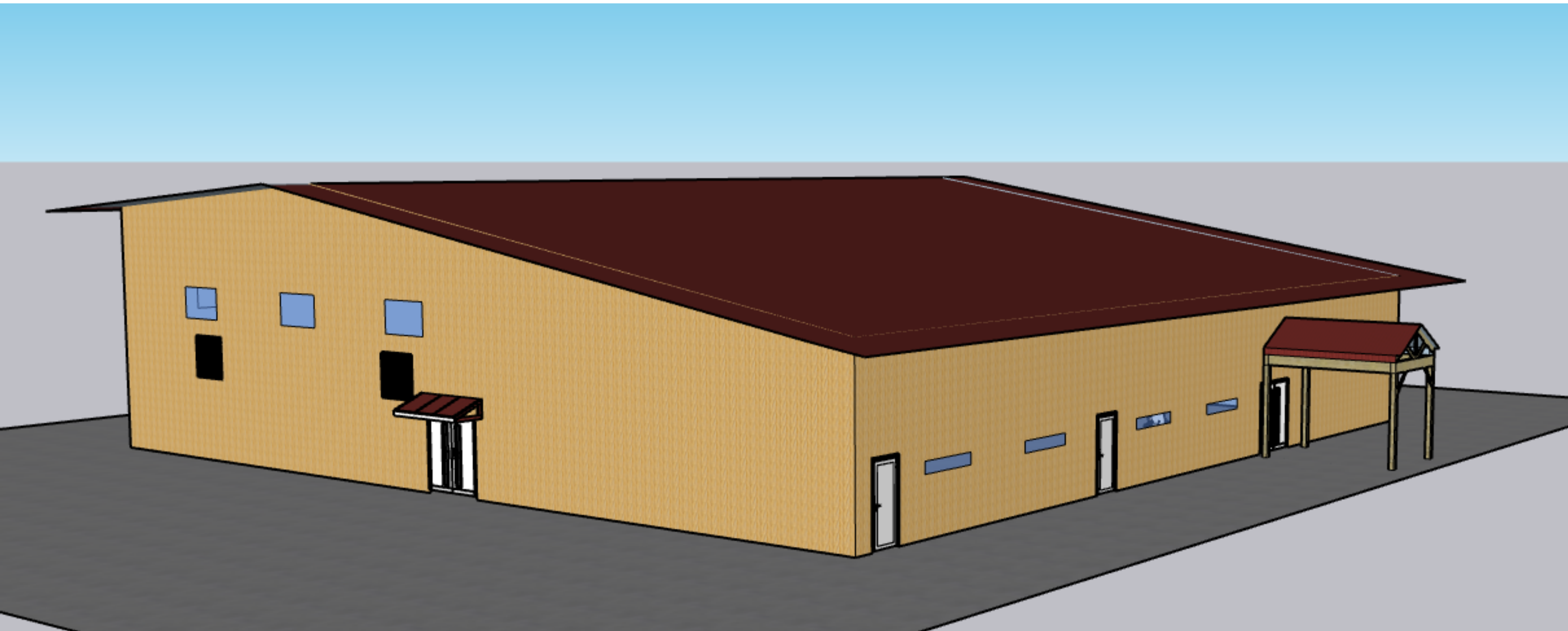
- Long Valley School
- Thompson Peak Charter

OPTION 1: 5 WINDOWS SOUTH SIDE
3 WINDOWS EAST/WEST









OPTION 2: 7 WINDOWS SOUTH SIDE
3 WINDOWS EAST/WEST



